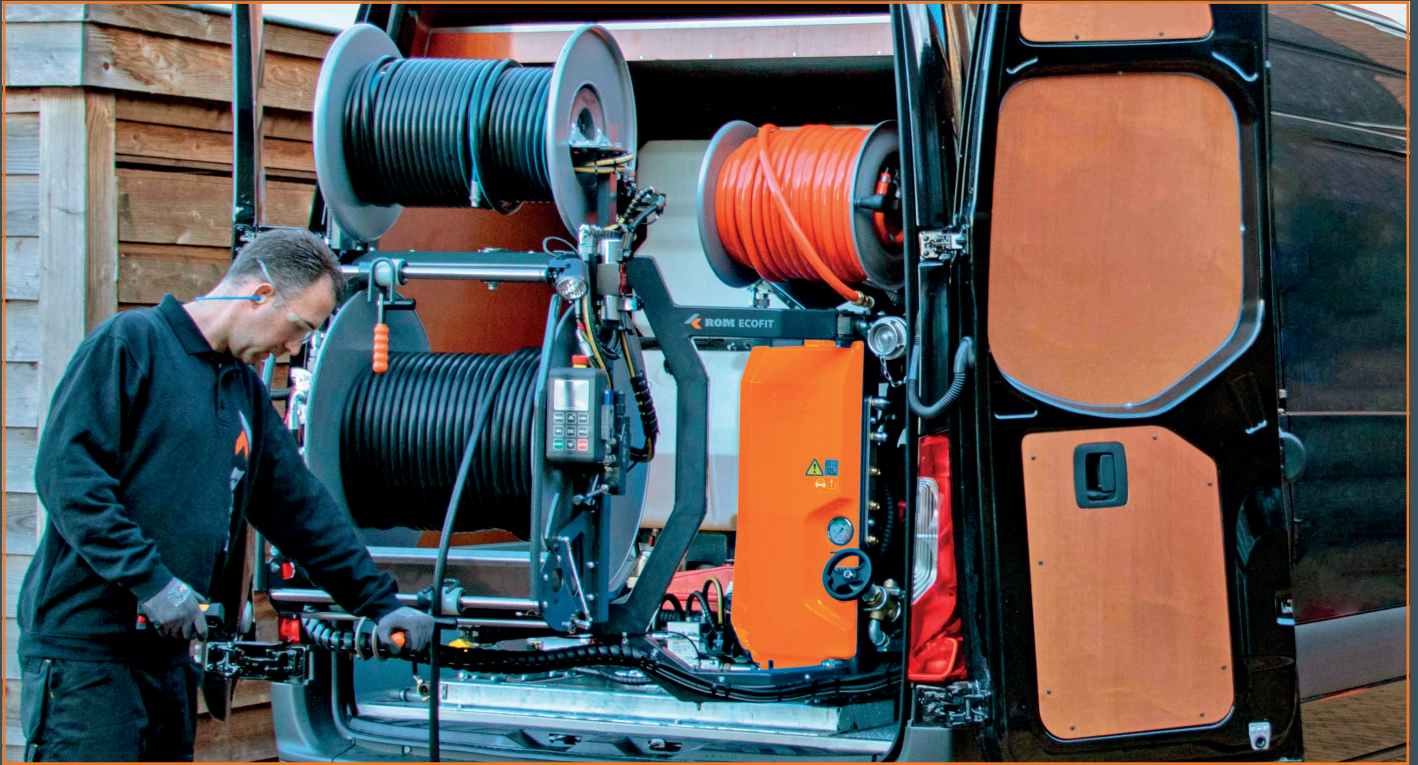


ROM EcoFit | High-pressure sewer cleaning installation

'Superior performance. For the toughest jobs'



Maximum power, versatility and optimal comfort. The revolutionary ROM EcoFit is built to carry out the toughest work. If you choose our 'Beast', you will benefit from the latest sewer cleaning technologies every day. A 270°-rotatable high-pressure reel, iROM control, and the unique 'ROM 3 reel system' results in a superior machine that allows you to deal with any blockage. With a cleaning pressure up to 200 bar and a water capacity up to 130 l/min, the EcoFit is suitable for unblocking and cleaning domestic sewage connections and main sewer systems up to Ø600 mm.

'ROM 3 reel system' for maximum usability

The EcoFit comes with two hydraulically-operated reels as standard. A unique feature is that the reels are also suitable for high-pressure hoses with a larger diameter and longer lengths. This means you can use it to clean pipes with larger diameters and for longer distances. You can equip a reel with 120 m 5/8" or 3/4" high-pressure hose for pipes of Ø200 - 600 mm and the second reel equipped with a 120 1/2" high-pressure hose for cleaning pipes from Ø70 - 200 mm. You even have an optional choice for a third reel with a water filling hose. This creates countless possibilities.

Wide choice of water tanks

Choose from an 800, 1000 or 1350-litre water tank. For extra water capacity, you can choose two of these water tanks. Combine them as you wish. For example, 800 plus 800 litres = 1600 litres.

Makes light work of the toughest jobs

The machine has a 270°-rotatable high-pressure reel with a range of over 1 metre outside the vehicle so you can work on both left and right hand sides of the vehicle. You can turn the reel outwards with just one finger. The high-pressure hose can then be unrolled automatically at the push of a button. An important advantage is that the reel can also be used without having to pivot out. All this is done at the most ergonomic working height.

Lightweight and compact

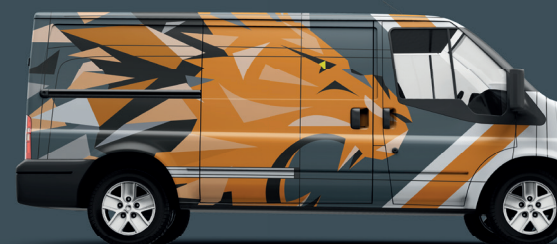
The EcoFit fits in (medium-)heavy commercial vehicles such as the MB Sprinter, Volkswagen Crafter, MAN TGE, Iveco Daily and Renault Master. Even the most powerful configurations are compact enough for these vehicles. Thanks to the compact design and low empty weight, you can carry large quantities of water and retain more storage space.

Very richly equipped as standard

The EcoFit is already very richly equipped as standard with, among other things, a remote control, dry run protection, working light, intelligent iROM operation, hydraulic drive of both 1st and 2nd reel and a nozzle rack.

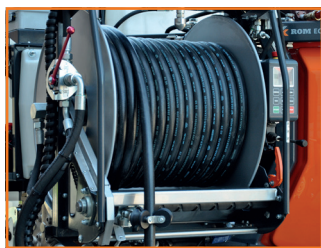
Indestructible

Thanks to the use of extremely strong materials, A-brand parts, and more than 40 years of experience, you can rely on the EcoFit. Day in, day out. Nothing has been left to chance. For example, the water tanks are not attached directly to the base, which prevents abrasion and wear. In addition to the very capable basic version, there is a wide choice of options and accessories.



ROM EcoFit | 'The Beast'

Technical information



Suitable for

Unblocking and cleaning (sewer) pipes up to Ø600 mm
Façade, surface and drainage cleaning and removal of light graffiti

Drive

Water-cooled petrol engine
(also available in Power Take-Off: see ROM EcoFit Power Take-Off)
Electronic start-up system

High-pressure pump

Speck P45, P55 & P150/100, 3 plunger high-pressure pump
Cleaning pressure up to 200 bar and a water capacity up to 130 l/min.

Reel 1

Hydraulically-driven high-pressure reel
Solid (electrolytic) galvanised high-pressure reel
Suitable for max. 120 m 1/2", 120 m 5/8" or 120 m 3/4" Trelletjet

Reel 2

Hydraulically-driven water filling hose reel incl. 50 m 3/4" water hose (ND 20)
Optional: replace water filling hose reel for 2nd hydraulically-operated high-pressure reel (max. 120 m 1/2")

Reel 3 (optional)

Extra, manually driven water filling hose reel incl. 50 m 3/4" water hose (ND20).
Note: Reel 2 is then equipped with a 2nd hydraulically-operated high-pressure version, which means the filling function is no longer applicable on reel 2

Preservation

Base frame hot-dip galvanised | Machine frame, swivel arm and subframe sprayed in RAL7016 Anthracite grey | Front plate sprayed in RAL2004 Pure orange
Reel made from steel, sprayed in RAL 9006 White aluminium coloured
Other metal (plate) parts are electrolytically galvanised

As standard, equipped with

Remote control | Automatic KUBOTA engine start on operating panel and remote control
Hydraulic drive of both 1st and 2nd reel
Intelligent iROM operation
80m. hp hose | Dry run protection | Bypass switch
Suction-injector | Working light (LED)



Benefits

- Two hydraulically-operated reels as standard
- Optional 3rd reel available
- Hydraulically-operated, 270° rotatable high-pressure reel (can be used in rest position and swivelled position)
- Rotatable 2nd reel, iROM operation and stainless steel drip tray
- Maximum power (cleaning pressure and flushing capacity)
- Effectively clean pipes with larger diameters and longer distances due to the fitting of larger diameter/longer length hoses on the reels
- Heat exchanger for optimal temperature control
- Wide choice of water tanks
- Low centre of gravity for stable and safe handling with both empty and full tank
- Hot-dip galvanised base frame
- Double wall insulated stainless steel damper
- Water filter with automatic water stop and washable element
- Toothed belt drive: higher efficiency drive and longer service life
- Maintenance-friendly

Article number	028060121	028060152	028060221	028060252	02806061	02806071
Version	ROM EcoFit 200/75 Industrial Petrol Comfort	ROM EcoFit 200/75 Diesel Comfort	ROM EcoFit 155/100 Industrial Petrol Comfort	ROM EcoFit 150/100 Diesel Comfort	ROM EcoFit 200/100 Diesel Comfort	ROM EcoFit 160/130 Diesel Comfort
Starting system	Electric					
Engine	42,5kW / 58hp KUBOTA WG1605 EU Stage V & EPA Tier 4 Industrial Petrol engine	37kW / 50hp KUBOTA D1803-CR-T EU Stage V & EPA Tier 4 Diesel engine	42,5kW / 58hp KUBOTA WG1605 EU Stage V & EPA Tier 4 Industrial Petrol engine	37kW / 50hp KUBOTA D1803-CR-T EU Stage V & EPA Tier 4 Diesel engine	44kW / 60pk KUBOTA V2403-CR-T EU Stage V & EPA Tier 4 Diesel engine	
Pump	Speck P45/75		Speck P150/100		Speck P55/100	Speck P55/130
Water tank	800l					
Empty weight	Approx. 850kg	Approx. 895kg	Approx. 850kg	Approx. 895kg	Approx. 945kg	
Dimensions	1605 x 1365 x 1585mm	1930 x 1365 x 1585mm	1605 x 1365 x 1585mm	1930 x 1365 x 1585mm		
Reel 1	Hydraulically operated high pressure reel					
HP hose	80m 1/2" (ND13)		80m 5/8" (ND16)		80m 3/4" (ND20)	
Reel 2	Hydraulically operated water filling hose reel with 50m. 3/4" filling hose (ND20)					
Reel 3 (option)	Additional manually operated filling hose reel (reel 3) with 50m. 3/4" filling hose (ND20). Note: Reel 2 is fitted with a 2nd HP reel. Filling function on reel 2 expires.					
Remote control	Remote control Professional-Remote ("In- & Outdoor"), 8 button					
Operating system	Intelligent iROM control					

ROM EcoFit PTO

TAKE ADVANTAGE OF THE BENEFITS OF MECHANICAL POWER TAKE-OFF. CHOOSE DRIVE FROM VEHICLE ENGINE

Free installation in Mercedes Benz Sprinter or Iveco Daily



Benefits of mechanical Power Take-Off

- Weight saving (for example, no separate combustion engine and/or large hydraulic tank)
- Maintenance friendly (Less parts = less wear)
- Less noise pollution (vehicle engine is quieter)
- More environmentally friendly (consumption of vehicle engine is generally more friendly to the environment than machine's combustion engine)
- High-pressure pump is not powered by hydraulic oil (minimum chance of contamination) for Mechanical Power Take-Off

Note: Please consult ROM in advance for vehicle advice.

ROM EcoFit Power Take-Off High-pressure sewer cleaning installation

Article number	0280612	0280614	0280616	0280618	0280622
Version	ROM EcoFit 200/72 PTO Comfort	ROM EcoFit 150/100 PTO Comfort	ROM EcoFit 250/60 PTO Comfort	ROM EcoFit 160/130 PTO Comfort	ROM EcoFit 160/90 & 475/30 PTO Comfort
Starting system	Via vehicle engine				
Engine	PTO - "Emission compliant"				
Pump	Speck P45/72	Speck P150/100	Speck P45/60	Speck P55/130	Speck P52/30 & NPR25/60
Water tank **	800l				
Empty weight	960 kg				1015 kg
Dimensions *** (lxwxh)	1700 x 1365 x 1585mm				
Reel 1	Hydraulically operated high pressure reel				
HP reel drive	80m. 1/2" (ND13)	80m. 5/8" (ND16)	80m. 1/2" (ND13)	80m. 3/4" (ND20)	80m. 5/8" (ND16)
Reel 2	Hydraulically operated water filling hose reel with 50m. 3/4" filling hose (ND20)				Hot water unit, incl. hydraulically-driven reel with 80 m 3/8" (ND10) heat-resistant hose.
Reel 3 (option)	Additional manually operated filling hose reel (reel 3) with 50m. 3/4" filling hose (ND20). Note: Reel 2 is fitted with a 2nd HP reel. Filling function on reel 2 expires.				
Remote control	Remote control Professional-Remote ("In- & Outdoor"), 8 button				
Operating system	Intelligent iROM control				

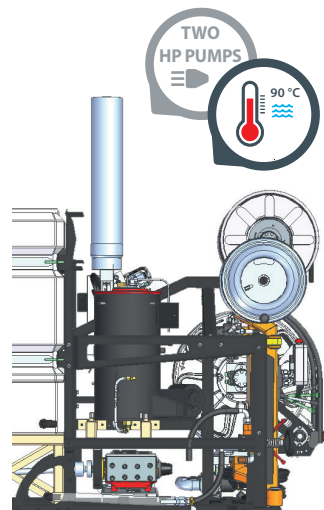
** Choice of tank capacity: 800, 1000 or 1350 litres

*** Note: The installation can also be carried out shorter by opting for a more compact water tank

ROM ECOFIT PTO 'ALL-TERRAIN EDITION'

The ROM EcoFit Power Take-Off is also available in a special version for maximum versatility of use. The well-equipped 'All-Terrain edition' is a real all-rounder and makes light work of the toughest jobs. The all-round machine is equipped with two powerful high-pressure pumps and a hot water unit for maximum freedom of choice.

- ✔ Exceptional cleaning pressure: 450 bar - 30 l/min.
Maximum cleaning power for the removal of rust, ice and grease in pipes (such as is found in the stand pipes of high-rise buildings)
- ✔ More rinsing capacity: 160 bar - 86 l/min.
Optimal flushing effect in larger (sewer) pipes
- ✔ Powerful 70 kW hot water burner (90°)
Clean with hot water to liquefy blockages, such as ice and grease, and wash them away easily and quickly
- ✔ The hot water and spray gun with lance mean you can clean surfaces very effectively

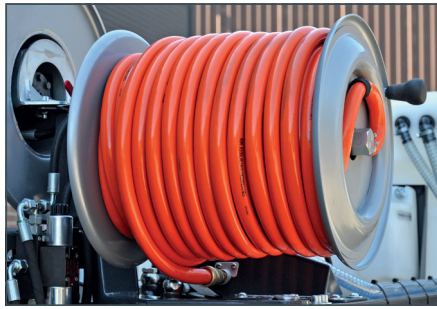


Benefits of the 'All-Terrain'

- Take advantage of the benefits of the ROM EcoFit with wide selection of extras
- Use 1st high-pressure pump for maximum cleaning pressure: 450 bar - 30 l/min.
- Simultaneously switch on the 2nd high-pressure pump for increased flushing capacity: 160 bar - 86 l/min.
- Clean with cold or hot water
- Supplied with powerful 70 kW hot water burner as standard. Achieves 90° for maximum effect
- Hot water is available immediately due to the separate burner. You can start work immediately. Several steps of water heating by circular pumping is not required. This saves considerable time and fuel
- Improved cleaning result with much less water so you can clean more pipes without frequent refilling

OPTIONS ROM ECOFIT

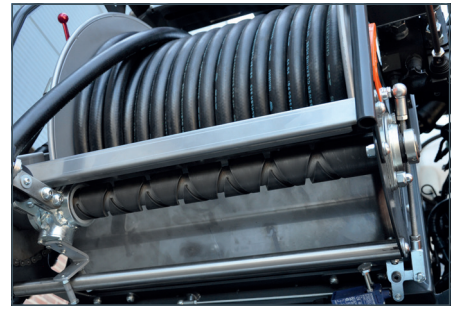
040313



Additional filling hose reel (reel 3)

- Additional manually operated filling hose reel (reel 3) with 50m. 3/4" filling hose (ND20). Note: Reel 2 is fitted with a 2nd HD version in which filling function on reel 2 expires.

043721



Automatical hose guiding system

- Automatical hose guiding system for reeling and un-reeling of HP hose on reel 1 by means of cross spindle system, incl. adjustment of hose guiding system | hose length max. 120m. 1/2", 120m. 5/8" or 120m. 3/4"



Longer hoses and larger diameters

- **0485050** 100m. instead of 80m. 1/2" HP hose
- **0485150** 120m. instead of 80m. 1/2" HP hose
- **04852** 100m. instead of 80m. 5/8" HP hose
- **0485201** 120m. instead of 80m. 5/8" HP hose
- **04854** 120m. instead of 80m. 3/4" HP hose



Second HP reel

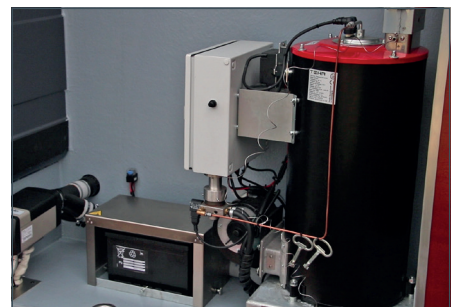
- **042303** Hydraulically driven second HP reel instead of water filling reel. Equipped with extendable hose guiding system with ball bearings + 40m. 3/8" HP hose (l.c.w. EcoFit with reel 1: 80m 1/2")
- **042304** Hydraulically driven second HP reel instead of water filling reel. Equipped with extendable hose guiding system with ball bearings + 80m. 1/2" HP hose (l.c.w. EcoFit with reel 1: 80m 5/8" or 80m 3/4")



Extra water tank capacity

- **04131201** 1000l. instead of 800l. water tank
- **04131202** 1350l. instead of 800l. water tank

0423510



Hot water unit

- High pressure hot water unit 70kW "Commercial design" on a bracket, uses fuel tank of machine, 40m. 3/8" heat resistant hose and funnel

OTHER OPTIONS

Item no. Description

- 026900** Mounting of installation in Barneveld, consisting of accessories, labour and mounting according to the European CE regulations. (EcoFit Petrol & Diesel)
- 040401** Fuel from vehicle fuel tank (Standard fuel tank falls due), including fuel lift pump and mounting set (excl. labour). Note: vehicle must use the same fuel as the ROM unit!
- 04790010** Surcharge Electrical radio remote control HeavyDuty-Remote ("In- & Outdoor"), 10 buttons with pressure on/off, infinite speed control, information feedback through LED, information display, external antenna, removable rechargeable battery, emergency stop and battery charger for transmitter instead of radio remote control Professional-Remote, 8 buttons (iROM)
- 04794** Unwinding of HP hose reel via remote control (only in combination with hydraulically driven HP reel and 8 or 10 button remote control)
- 0479500** Reeling of high-pressure hose reel via remote control up to a safe distance of 5 metres from the machine (only in combination with option 04794)
- 0440** 2 stainless steel anti-surge baffle plates mounted inside 600, 800, 1000 or 1350l. water tank (Reduces rocking and increases driving comfort).
- 041012** Fixed hydrant filling connection equipped with STORZ coupling (cam size 66mm.) with filter. (EcoNomic+EcoFit)
- 0411** Extending hydrant filling connection equipped with STORZ coupling (cam size 66mm.) with filter. (EcoFit)
- 0481** Fixed venturi type ejector including 10m. Hose (ND50) and a Professional self floating synthetic basket. Connected onto water tank of the HP system.
- 0474** Automatic filling system water tank operating on 12/24V, mounting of floating system on filling connection and water filling hose reel (max. 8 bar pressure).
- 0484** Pulsation system, manually operated. For a lower water consumption and the hose advances further in the pipe and passes through bends easier
- 0423519** 80m. instead of 40m. 3/8" heat resistant hose for hot water unit
- 0551015** Frost protection system via air compressor; presses water out of the high pressure circuit (for frost free transport and storage) (not for SmartTrailer)
- 0071601** Nozzle set 3/4", consists of grenade 52, rotating nozzle, pointed nozzle.
- 00740** ENZ 1/2" nozzle case ROM Anniversary Edition with Grenade, Pointed nozzle, Rotojet KBR, Tool Case
- 0070** Nozzle case ROM JetToolcase (Hose ND13 & ND16 with 1/2" connection).
- 00710** Nozzle case ROM JetToolcase+ (Hose ND13 & ND16 with 1/2" connection).

No-hassle maintenance? Contact ROM for details of all our maintenance kits

Please note: The options for the EcoFit PTO may vary slightly. See ROM.

