

SPECIFICATIONS > PFT 3000/4AV-E

APPLICATION

PFT 3000/4AV-E has been specifically designed for sewer cleaning trucks.



DESCRIPTION

PFT 3000/4AV-E is a split shaft power take off whose dimensions and performance are particularly suitable for driving through cardan shafts hydraulic pumps, blowers, compressors above lorry's frame. The flange for cardan shafts can be mounted both on differential and/or cabin sides. On opposite side there is the possibility of having a flange for the direct mounting of a hydraulic pump.

The model "4AV-E" is an evolution of the "4AV". Helicoidal gears of the "4AV-E" version have

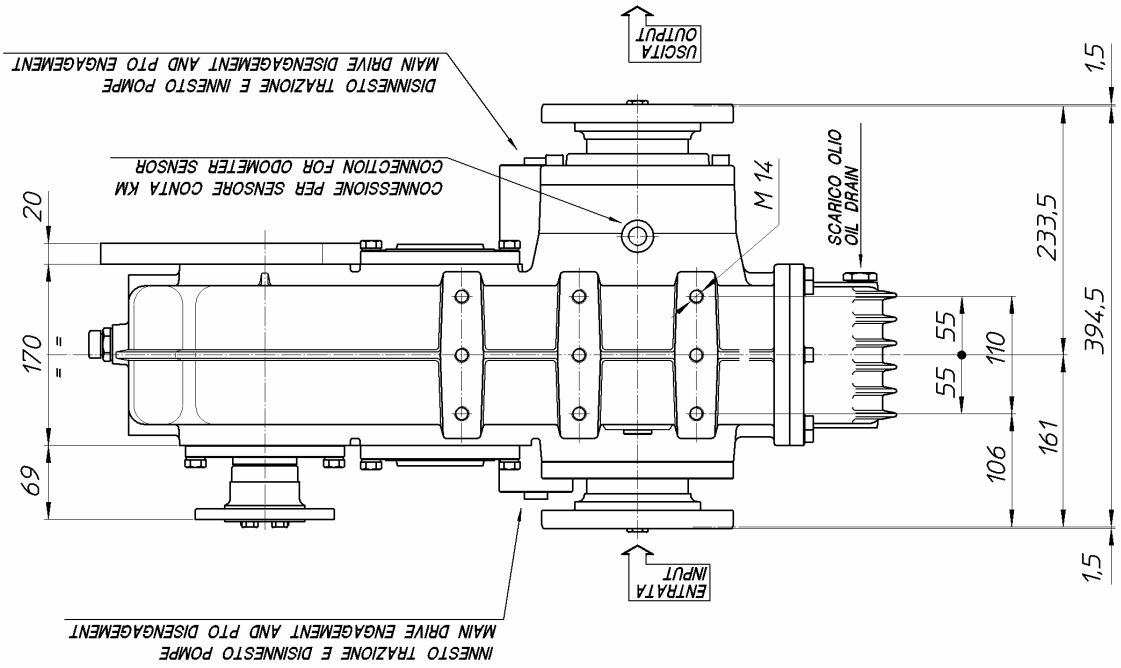
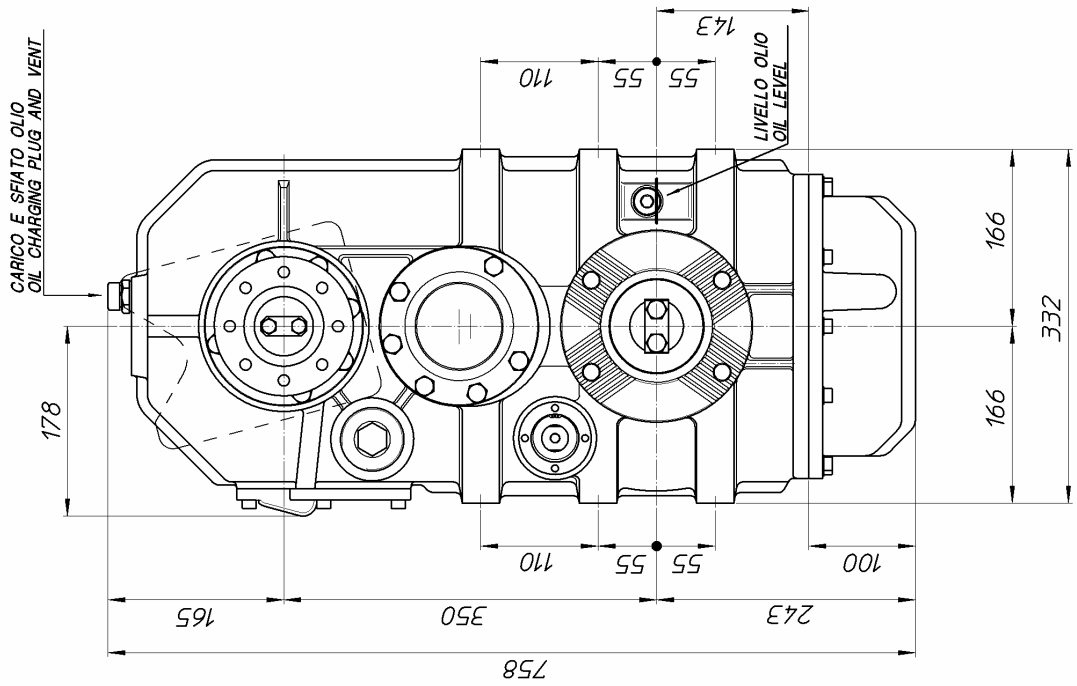
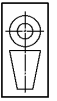
improved the max. power and the noisiness of the PTO.

For particularly high powers, or very adverse environmental conditions, it could be necessary to mount a fan on the output flange, or to use an oil cooler. In this case, a pump for forced lubrication can be mounted on the intermediate shaft.

The engagement of the main outputs and of the lubrication pump (if any), is automatic with the disengagement of the differential and vice-versa.

SPECIFICATIONS

| MAIN DRIVE | | | |
|---|-------|-------------------------|------------|
| Maximum continuous torque | | 21.000 (Nm)* | |
| Maximum instantaneous torque | | 30.000 (Nm)* | |
| Maximum speed | | 3.200 (rpm) | |
| AUXILIARY OUTPUTS | | | |
| Maximum power available at shaft | (kW)* | 290 | |
| Maximum torque available at shaft | (Nm)* | 2.000 | |
| Available drive ratios | | 1 (1,000) | 0,8 (1,25) |
| Maximum output speed | (rpm) | 2.200 | |
| Direction of rotation | | Same as the engine | |
| Power take-off operational with vehicle | | Stationary or in motion | |



DIMENSIONS