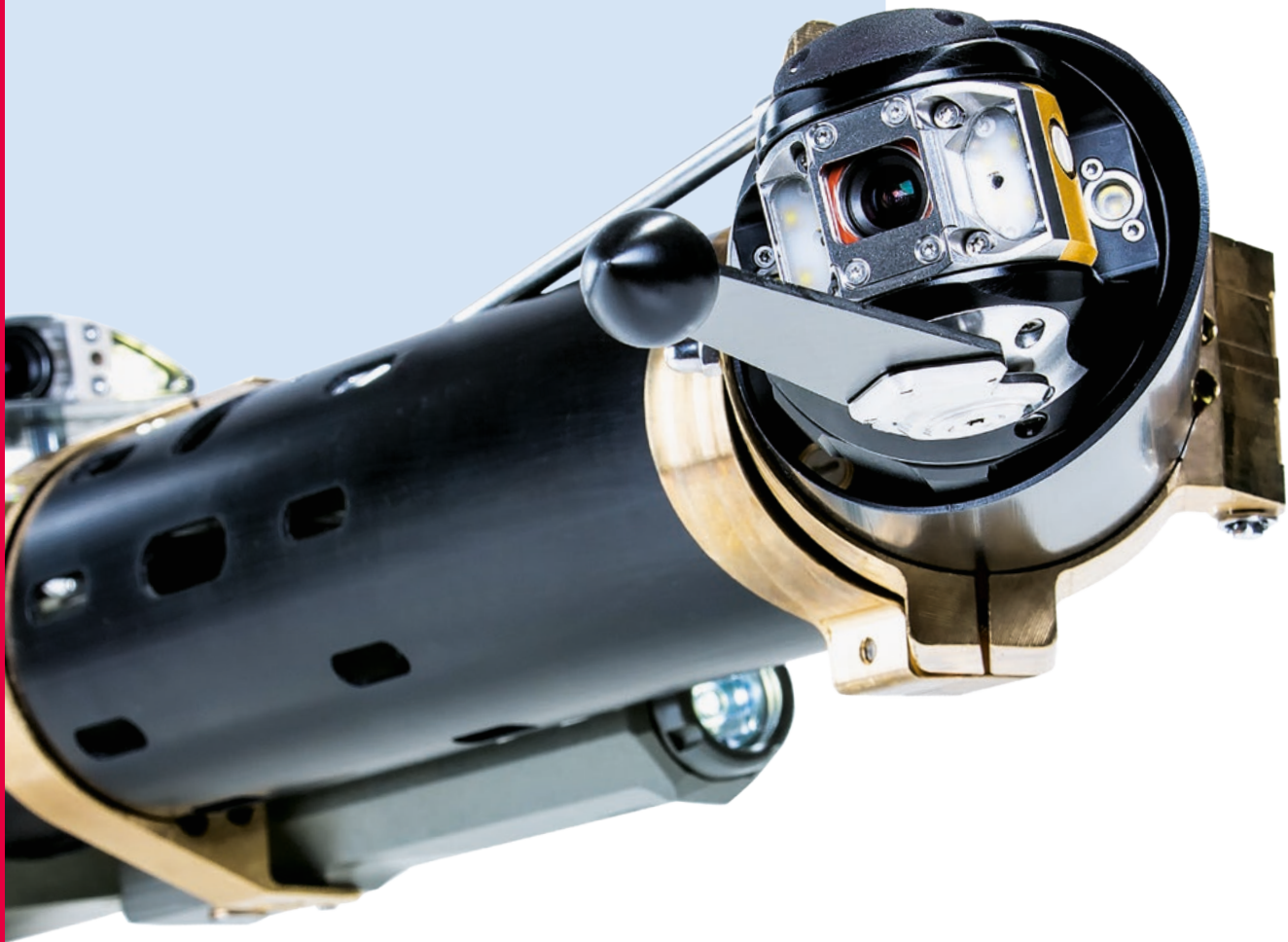
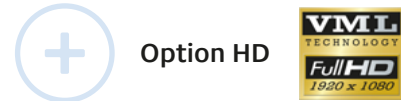


LATRAS

Precise recording



Precise Intelligent Efficient



LATRAS Lateral TRAKing System

This groundbreaking locating system for automatic measurement and graphic display of the pipe routing of house connection pipes is used in conjunction with the proven KS 60 DB camera. The control electronics of the system detect the direction of movement of the LATRAS sensor head. These xyz coordinates are permanently registered in parallel with the inspection and

allow the line routing to be automatically recorded simultaneously and without significant additional effort for the inspector and displayed in the PicoMaps map module. The quality of the inspection is significantly improved by the new and important information about the pipeline system. LATRAS can be retrofitted to systems equipped with the M series and the KS 60 DB camera.

LATRAS sensor head
Permanent acquisition of xyz coordinates. Online history drawing in the PicoMaps map module.

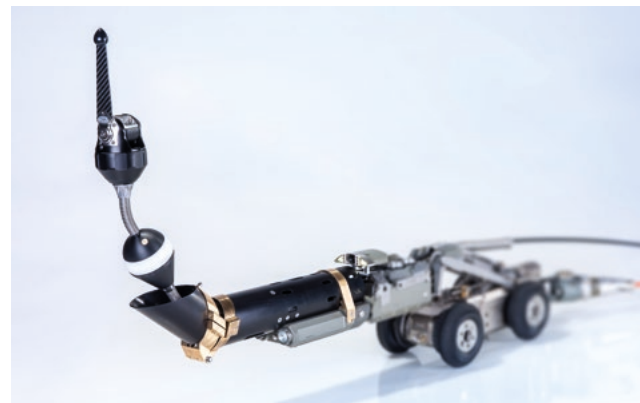
Flushing system
with propulsion nozzle

➔ LATRAS - Professional for building connection lines



LATRAS Guiding and positioning

- Feed technology with push or flush operation possible



KS 60 DB with LATRAS sensor head

- Resolution over 530 TV lines
- Manual and automatic focus
- Wide-angle lens with zoom
- Laser diodes for precise measurement
- Image in correct position

Technical details

- Positioning of the LATRAS sensors behind the KS 60 DB and KS 60 HD camera
- Feed technology with push or flush operation possible
- Determination of direction and inclination angles
- Distance measurement via incremental encoder with an error accuracy of less than 0.5%
- Online progress measurement in PicoMaps with xyz coordinates
- Measurement recording possible during forward and reverse travel
- Recalibration of the measurement result via endpoint determination
- Location probe optional with transmission frequency of 512 Hz or 33 kHz
- Operation on Rausch satellite systems
- Push operation possible
- Operation on DELTA possible



DELTA LATRAS

Mobile inspection for building connection pipes with location transmitter for automatic measurement and graphic display of the pipe routing.

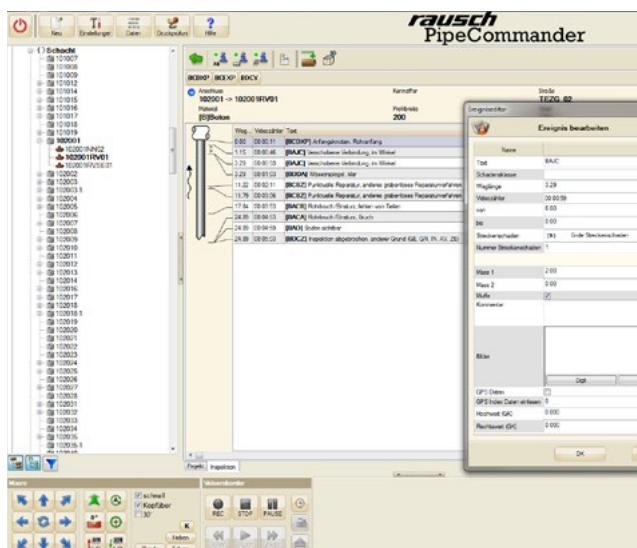
Rausch LATRAS

with PicoMaps

As a powerful additional module of our channel acquisition software PipeCommander, PicoMaps automatically retrieves all available channel network data with geo coordinates from the database. Based on this data, PicoMaps visualizes the connection cable progressions from CCTV inspection data - and this in best 3-D quality



PipeCommander



Technical details

- Opens cadastral maps as vector drawings suitable for the coordinate space
- Comprehensive sewer network representations based on master data
- Digitalization of manholes, sewer pipes and cables
- Automatic loading and adjustment of corresponding background maps
- Generation of site plans and their display in vector format
- Import of common DXF and SHP file formats
- Position display in UTM or DHDN
- Storage of vector maps (DXF, SHP)
- Free drawing in of objects and lettering